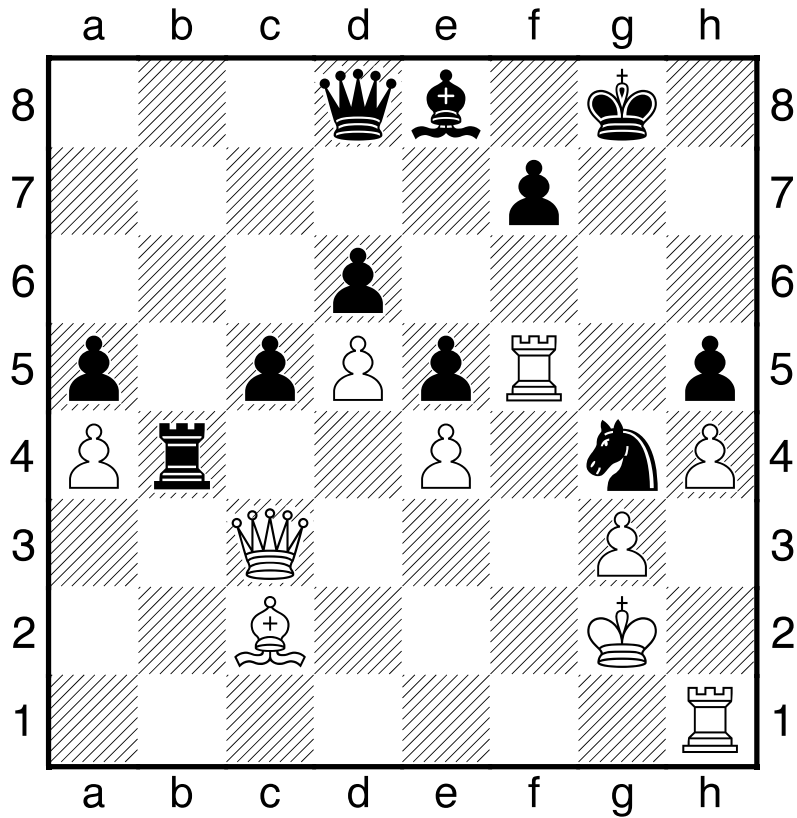


Kraemer, M
 ■ Hort, V
 (1.2) SMM Luzern – Reti

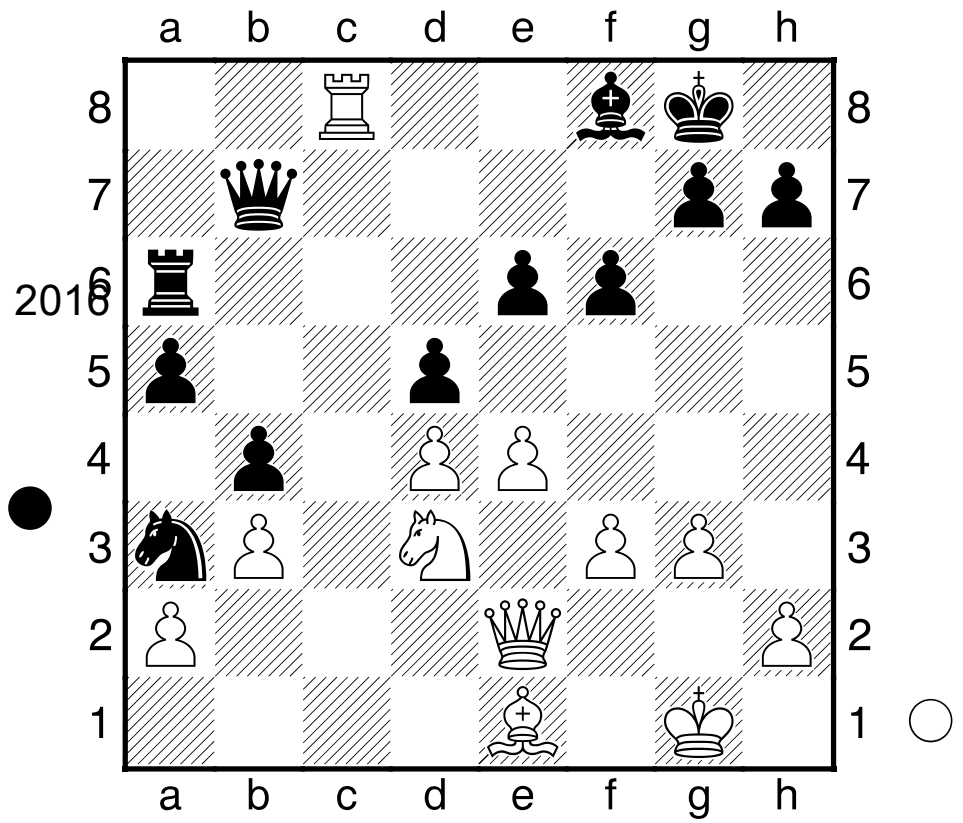


Schwarz am Zug gewinnt 1...Tc4 2.Dxc4
 [2.Dd2 Txc2 3.Dxc2 Ce3+]
 2...Ce3+

Degtiarev, E
 ■ Pelletier, Y
 (2.2) SMM Reti – Zurich

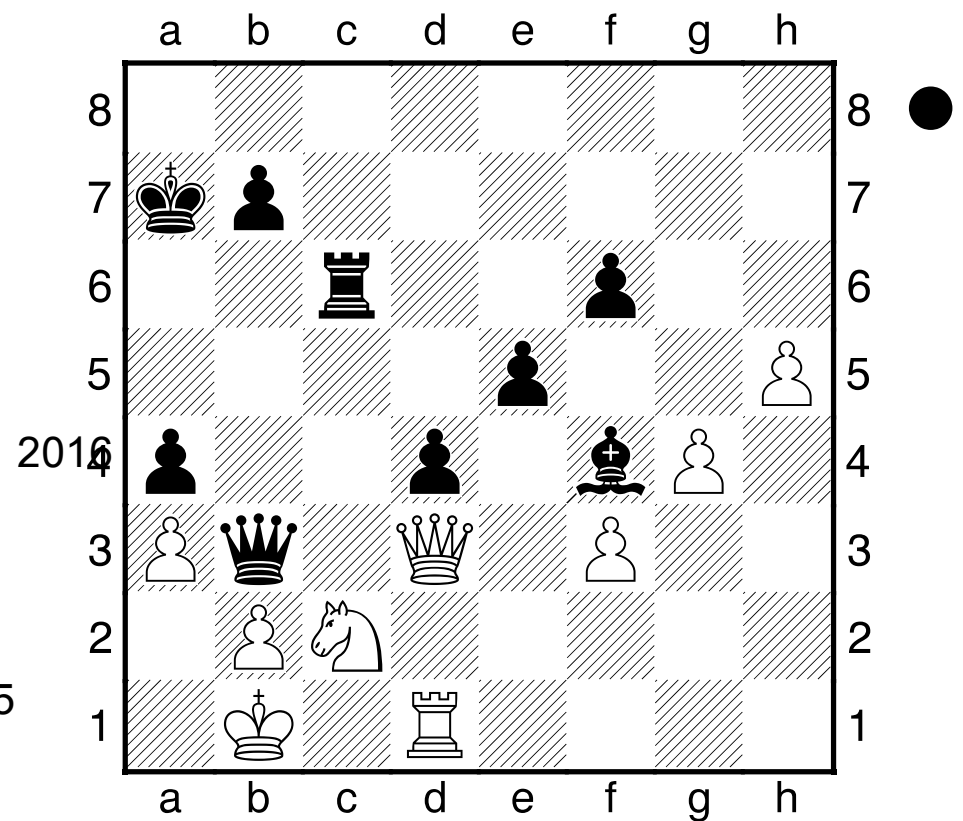
(Diagramma)

Weiss am Zug gewinnt. 1.Txf8+! Rxf8 2.Cc5



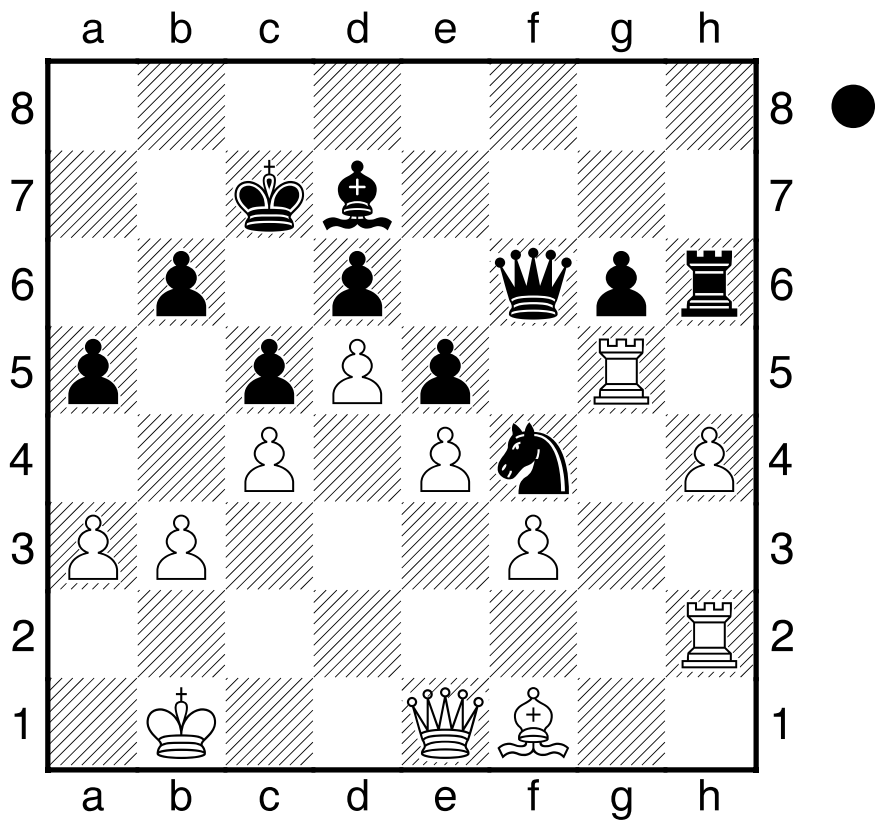
Schaerer, J
 ■ Wagner, C
 (7.8) SMM Winterthur – Reti

2016



Schwarz am Zug gewinnt. 1...Tc3 2.De2 d3
 3.Df2+ Rb8 4.Ce3 Axe3

Botta,G
 ■ Hoffmann,M
 (8.6) SMM Echallens – Reti 2016



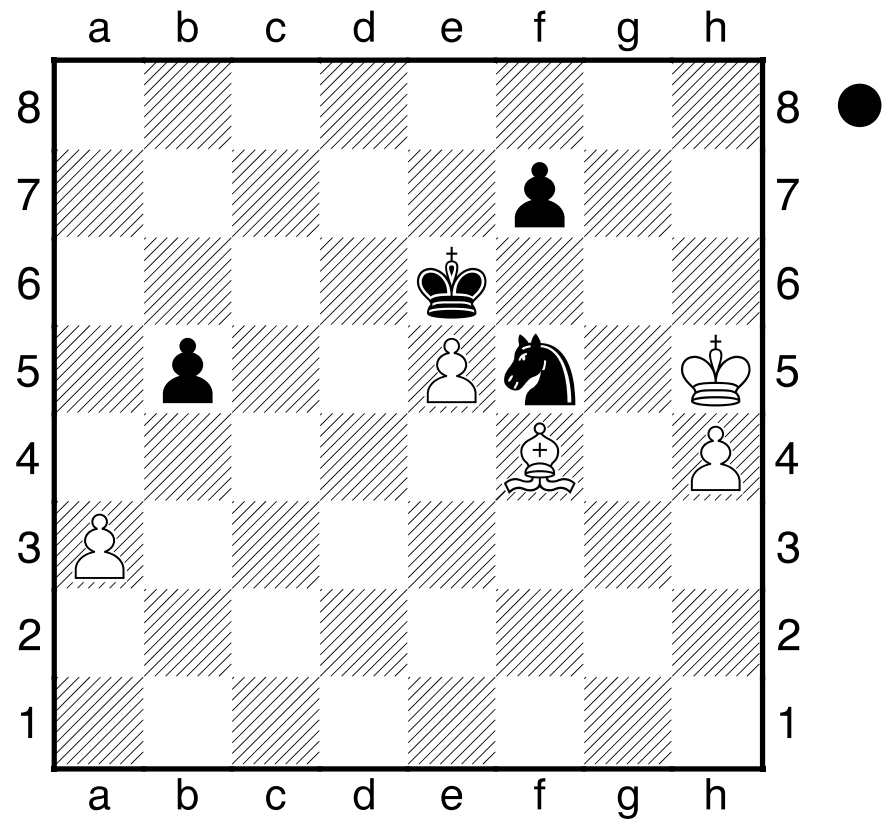
Schwarz am Zug gewinnt...oder vielleicht doch nicht! 1...Dxg5 2.hxg5 Txb2 mit der Idee von Th1 und Ah3. Deswegen hat Weiss hier aufgegeben. Vielleicht mit dem Computerzug 3.b4!!

[3.b4 axb4 4.axb4 cxb4 5.Dd1! Th1 6.Ra2 Ah3 7.Da4 Weiss konnte sich retten!]

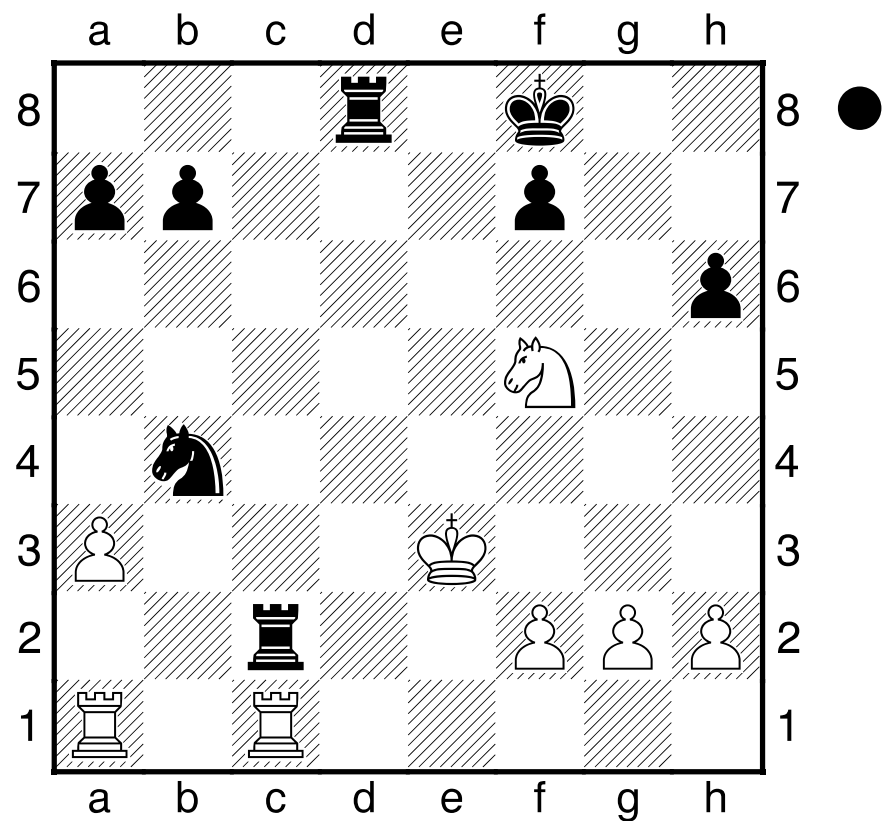
Buss,R
 ■ Antognini,F
 (4.5) SMM Riehen – Reti 2016

(Diagramma)

Schwarz am Zug haelt Remis. 1...Cxb4 2.Rxb4 f6 3.exf6 Rxf6 und der schwarze Koenig geht nach a8.



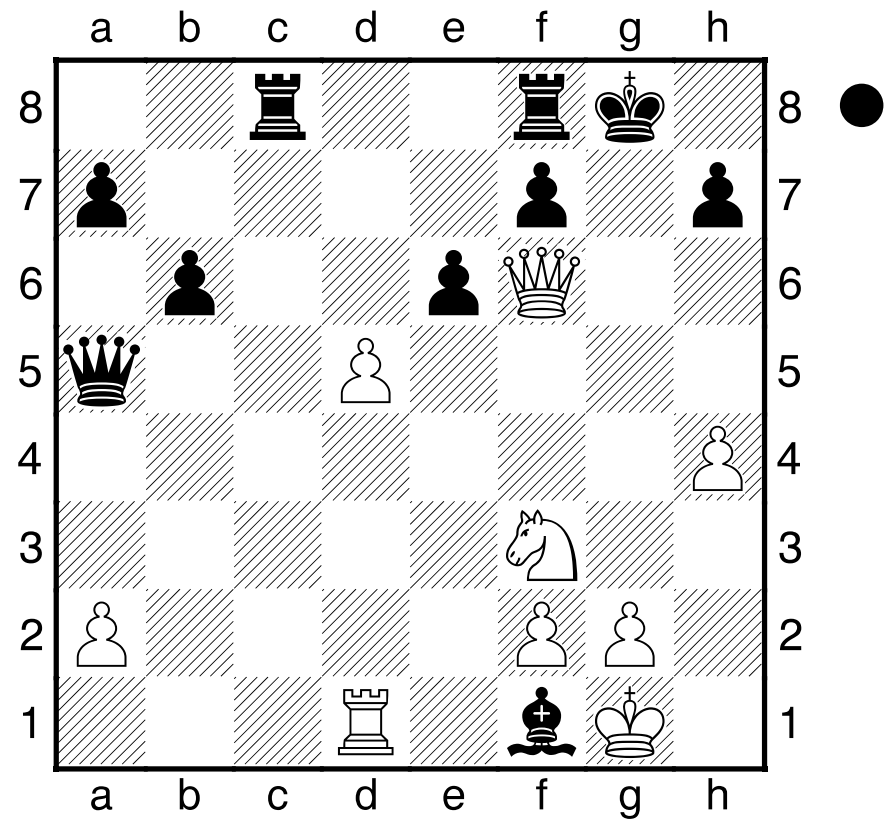
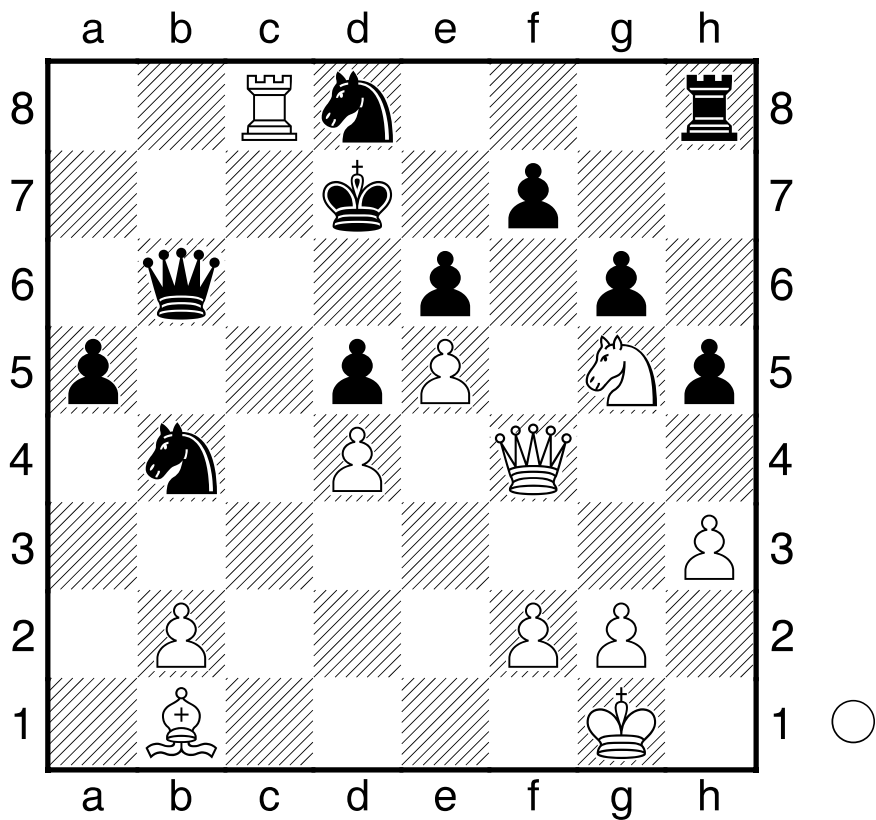
Hochstrasser,M
 ■ Wyss,J
 (6.5) SMM Wollishofen – Reti 2016



Schwarz am Zug gewinnt. 1...Tdc8 2.axb4 [2.Td1 T8c3+ 3.Re4 Cc6 4.Tab1 Txf2 5.Txb7 Tc4+ 6.Td4 Txd4+ 7.Cxd4 Cxd4 8.Rxd4 Txb2 9.Txa7 Txb2 ♯] 2...Txc1 3.Txa7 Te8+ 4.Rd4 Td1+ 5.Rc4 Tc8+ 6.Rb3 Tb1+ 7.Ra2 Txb4

Godena, M
 ■ Muheim, L
 (9.1) SMM Solothurn – Reti

2016



Weiss am Zug gewinnt. 1.Txd8+ Dxd8 2.Dxf7+ De7 3.Dxg6 Tf8 4.Dxh5 Cc6 5.Dg4

Ovseyevych, S
 ■ Stojanovic, M
 (9.1) SMM Solothurn – Reti

2016

(Diagramma)

Schwarz am Zug erhaelt klaren Vorteil. 1...Dc3
 2.Td4
 [2.Ce5 h6 3.Txf1 exd5 ♣]
 2...Ad3 3.h5 Dc1+ 4.Rh2 Ag6 5.hxg6 Dh6+
 6.Th4 Dxc6 ♣